

How is your hospital being redeveloped?

#HTBAH | hinfra.health.nsw.gov.au



Health
Infrastructure



Who is Health Infrastructure?

- We are the dedicated capital works arm of NSW Health
- We oversee the planning, design, procurement and construction of health facility investments valued at \$10 million and above

*The NSW Government's \$5 billion health capital works program
delivers a contemporary network of hospitals and health
facilities across the State*

What's involved in a redevelopment?

Each redevelopment undergoes three distinct phases

Planning

Design

Delivery



However, it is not a one size fits all approach - every redevelopment is tailored to a community's unique requirements.



Health

Infrastructure

hinfra.health.nsw.gov.au |



@NSWHealthInfra |



Health Infrastructure | #HTBAH





Considerations include

Population shifts and changing age profile

How the services operate by themselves, alongside surrounding services and what are the functional and design requirements

Staging construction so the hospital can still serve the community without impacting current services

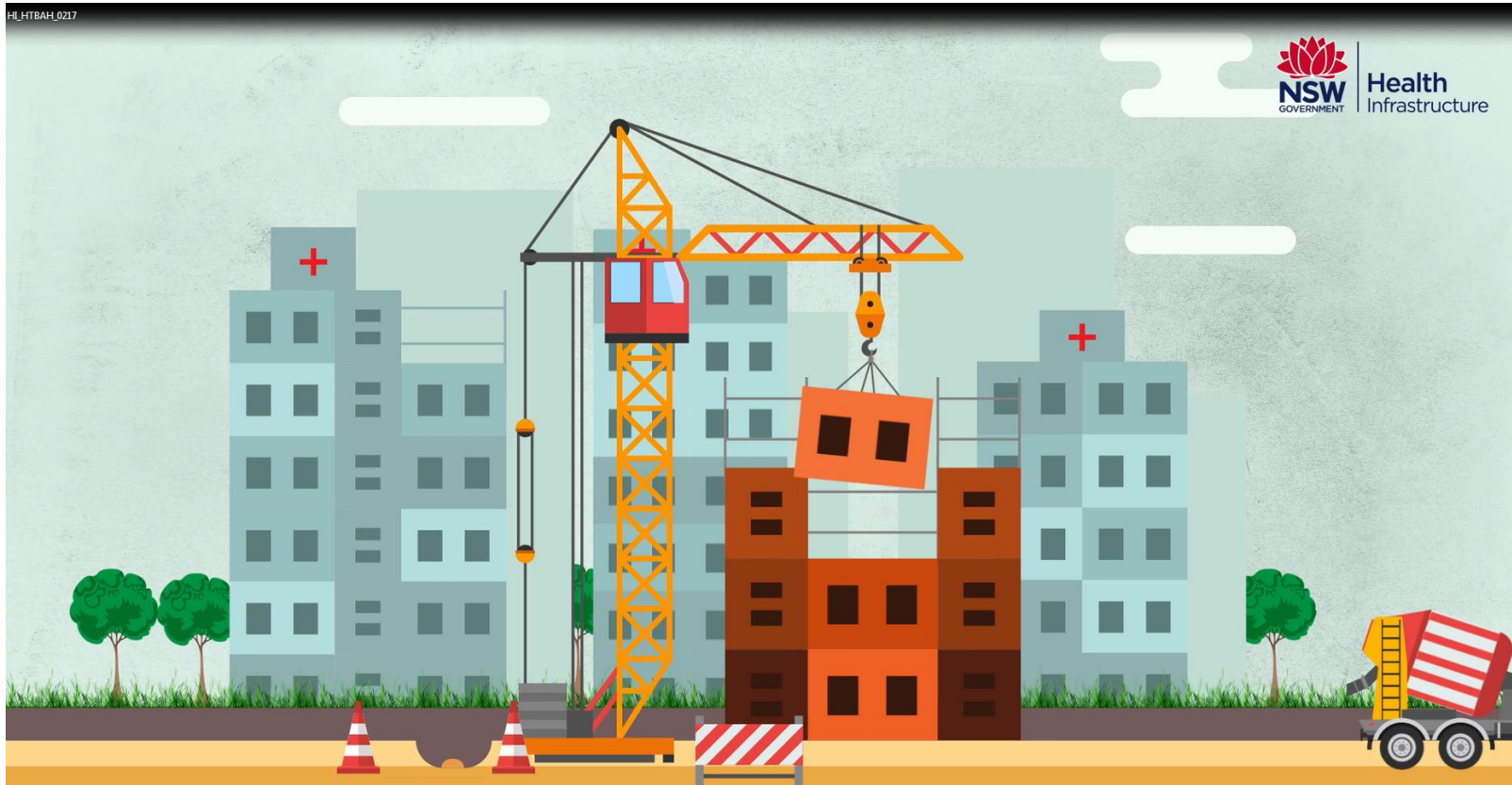
How staff get to and from the Hospital

How patients and staff use the Hospital space and can we enhance staff and patient privacy

How key services interact with one another including clinical or acute services buildings, structures housing specialist care units, and ancillary/support services

What services need to be included and where e.g. electricity, water and telecommunications

Animation



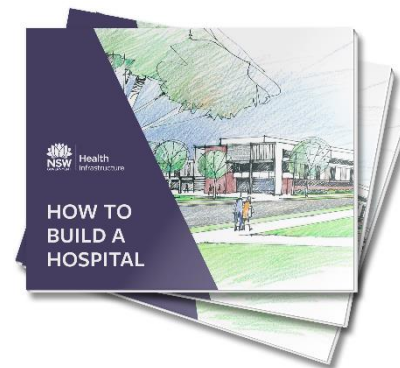
FIND OUT MORE



Social Media



Posters



In-depth booklet



Brochure



Animation

Further information available at hinfra.health.nsw.gov.au

Follow us  @NSWHealthInfra |  Health Infrastructure | #HTBAH