



HEALTH INFRASTRUCTURE

Partner Briefing 2024

7 November 2024

hinfra.health.nsw.gov.au



Agenda

Briefing

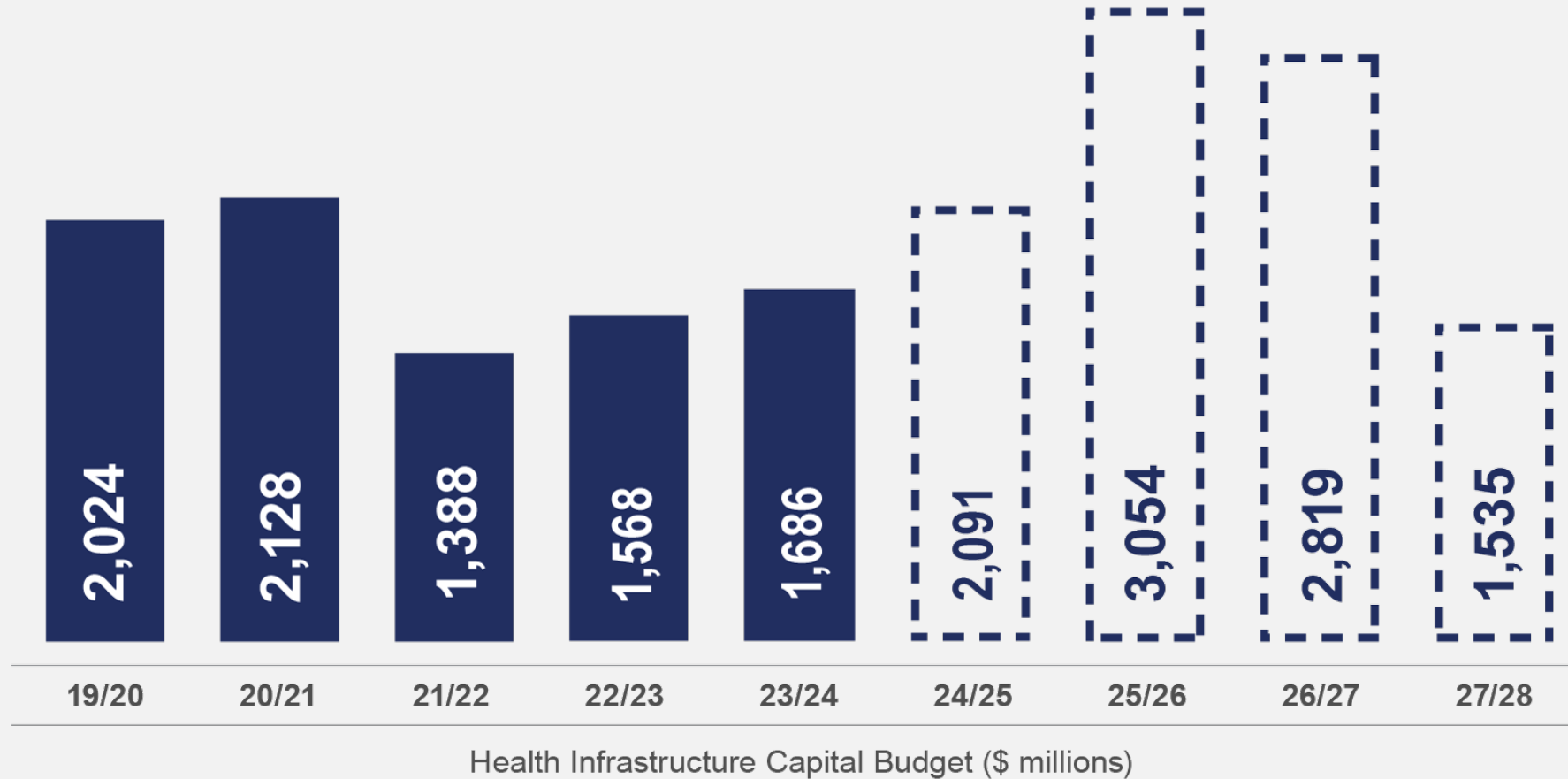
- Current environment
- Capital pipeline
- Safety and culture
- Standardisation
- Sustainability

Q&A Panel

- Q&A with the Health Infrastructure executive



NSW budget and pipeline of work



NSW HEALTH
is delivering
\$13.4 billion
in health capital
works to 2027-2028.

HEALTH
INFRASTRUCTURE
has **100+**
capital works
projects underway.

Current environment and challenges

Cost escalation



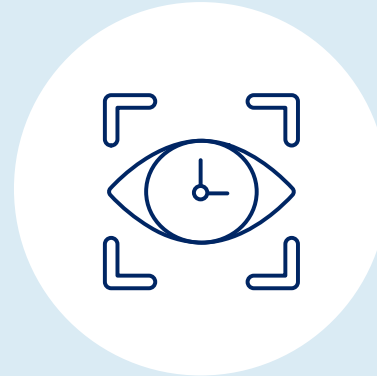
Price increases consistently exceeding industry benchmarks

Skills scarcity



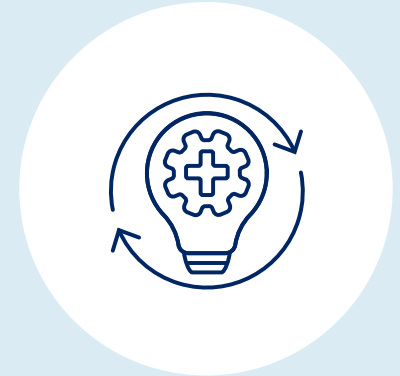
Record-level pipelines driving intense competition for scarce trade skills

Fiscal constraint



Governments reprioritising commitments and seeking efficiencies

Policy change



Inquiries and reforms increasing compliance/reporting

Health Infrastructure's priorities

Collaboration on challenges



Collaborating to address shared challenges and opportunities

Environmental sustainability



Increasing the focus on decarbonisation and resilience

Design standardisation



Simplifying choices, streamlining decision-making and achieving economies of scale

Safety and culture



Prioritising the physical and mental safety of all who work with us

New investment

Announced FY 2024-25

- \$265 million Port Macquarie Hospital upgrade
- Additional \$395 million for existing projects:
 - Ryde
 - Eurobodalla
 - Temora
 - Cessnock
 - Moree
 - Nepean
 - Shellharbour
 - Liverpool
 - Integrated Mental Health Complex Westmead



Statement of Participation Capital Consultants - 2023

Project Manager

- 12 projects
- 29 submissions
- 9 tendered to date
- 25 different companies provided an opportunity to date
- 6 different successful tenderers

Architect

- 11 projects
- 35 submissions
- 9 tendered to date
- 28 different companies provided an opportunity to date
- 6 different successful tenderers

Cost Manager

- 11 projects
- 24 submissions
- 9 tendered to date
- 19 different companies provided an opportunity to date
- 6 different successful tenderers



Statement of Participation – capital consultant schemes

- **Capital consultants:** Project Managers, Architects and Cost Managers
- **SCM1191** and **SCM10611** categories:
 - Architecture – Health (1191-203)
 - Architecture – Health Infrastructure (1191-220)
 - Architecture – Health (10611- 2B)
 - Quantity Surveying (1191-301)
 - Project Manager – Health Infrastructure (1191-336)
 - Project Manager – Health Infrastructure (10611-1B)
- **No upcoming SOP planned this stage**



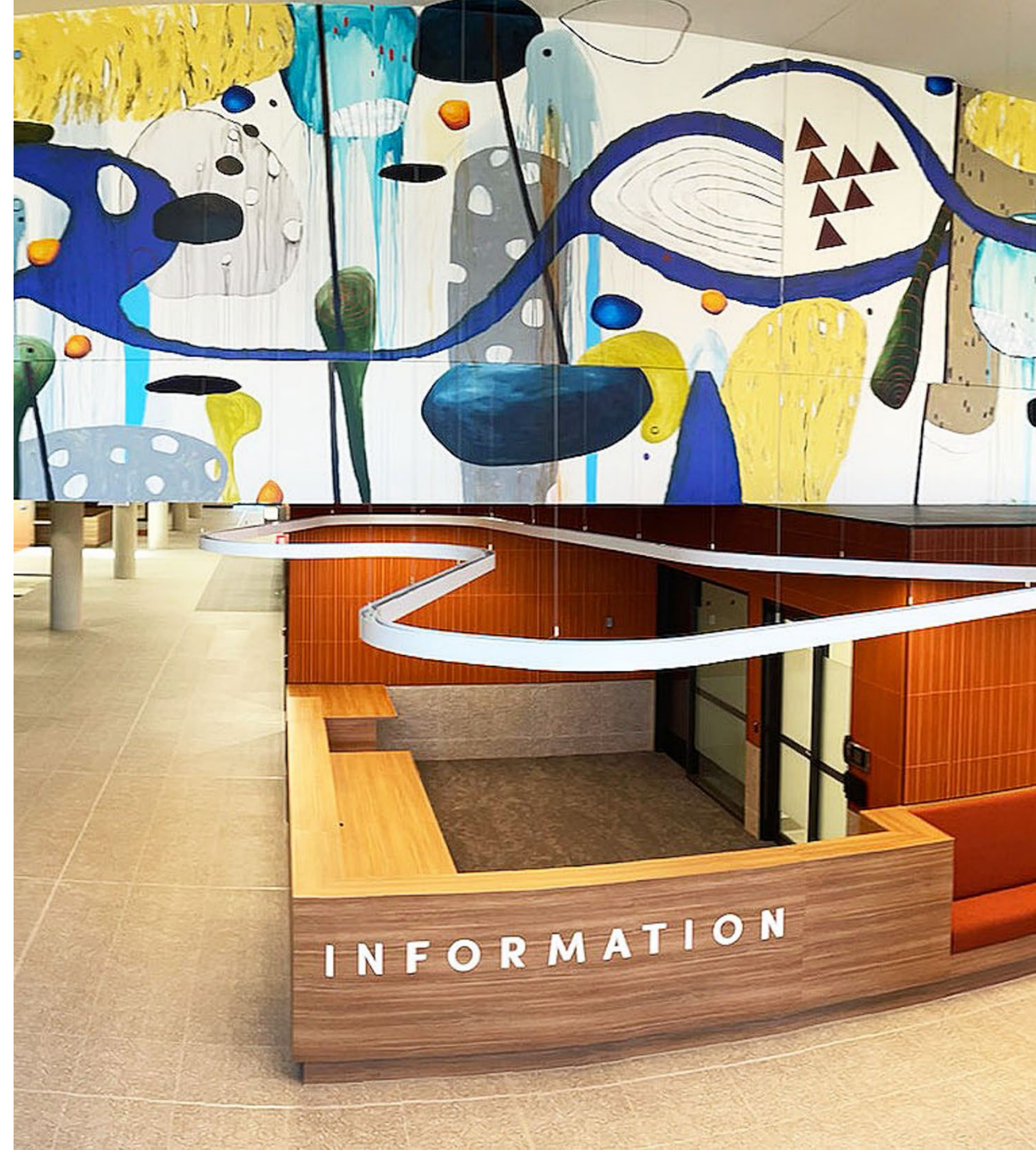
Statement of Participation - Engineers

Recently conducted for:

- Port Macquarie Hospital
- Blue Mountains Hospital
- Nepean Community Health Service
- HealthShare Linen Facility
- Ambulance Infrastructure Project (AIP)
- Mid North Coast Health Redevelopment

Results:

- 61 submissions
- 4 projects to tender
- 30 different companies will be provided an opportunity



2025 construction tenders

Projects:

- Glen Innes Hospital Redevelopment
- Temora Hospital Redevelopment
- Maitland Mental Health/Community Health
- Albury Hospital Early Works
- Rouse Hill Hospital
- New Bankstown Hospital Early Works

Programs:

- Ambulance Infrastructure Program
- Palliative Care Program

Current forecast. Subject to change.



Safety

- HI standardised **WHS metrics and improved analysis and reporting** capability
- Key **safety trends** presenting in data
- Series of **engagements on key topics** with contracting teams planned
- **Number one priority**



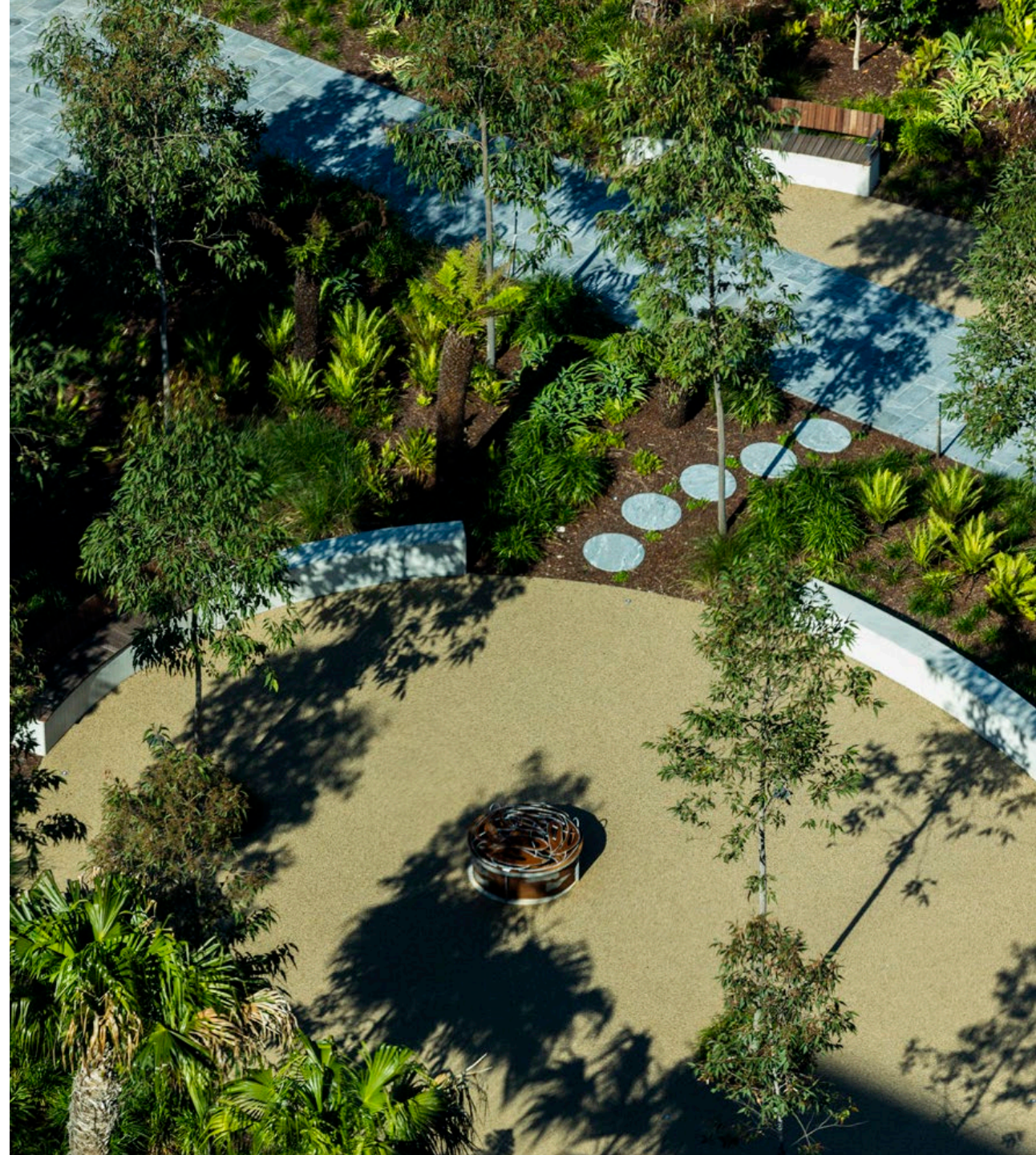
Design standardisation

- Further **streamlining** the facility design process
- More **consistent** quality and user experience
- More **efficient, more sustainable**
- **Catalogues of specific design standards** soon to be embedded in range of areas
- **Industry input** being sought in some categories



Environmental sustainability

- Progressively **revising mandatory sustainability requirements** in line with incoming policy
- Projects prioritising **electrification, renewable energy, innovative waste management**
- Future focus on **energy/water efficiency and resilience**
- **Process changes** to business cases, carbon management planning, early market engagement



Health Infrastructure executive



Emma Skulander
A/Chief Executive



Amanda Bock
Executive Director
Rural & Regional



Leisa Rathborne
Executive Director
Northern



Marcus Moscos
A/Executive Director
Western



Nicky Seaby
A/Executive Director
Capital & Commercial
Advisory



Sayeed Zia
A/Chief Operating Officer

